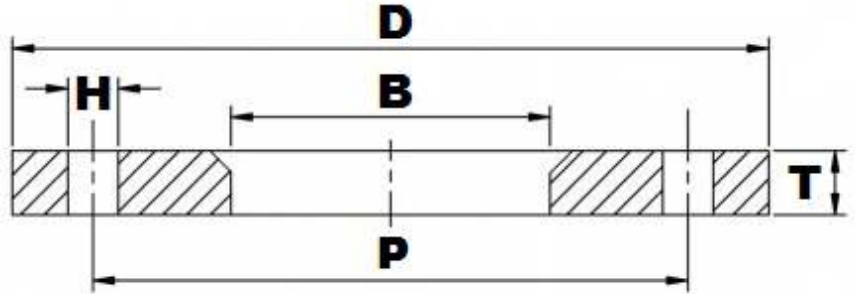


EN1092-1 TYPE02A BACKING FLANGES



Part Number	Size	Rating	D	B	T	H	P	No. of Holes	Kg (Pce)
015F16/02BZPNB	DN15	PN40	95	25	14	14	65	4	0.65
020F16/02BZPNB	DN20	PN40	105	31	16	14	75	4	0.91
025F16/02BZPNB	DN25	PN40	115	38	16	14	85	4	1.08
032F16/02BZPNB	DN32	PN40	140	47	18	18	100	4	1.77
040F16/02BZPNB	DN40	PN40	150	53	18	18	110	4	2.02
050F16/02BZPNB	DN50	PN40	165	65	20	18	125	4	2.65
065F16/02BZPNB	DN65	PN16	185	81	20	18	145	4	3.05
080F16/02BZPNB	DN80	PN16	200	94	20	18	160	8	3.48
100F16/02BZPNB	DN100	PN16	220	120	22	18	180	8	4.20
125F16/02BZPNB	DN125	PN16	250	145	22	18	210	8	5.21
150F16/02BZPNB	DN150	PN16	285	174	24	22	240	8	6.89
200F16/02BZPNB	DN200	PN16	340	226	26	22	295	12	9.31
250F16/02BZPNB	DN250	PN16	405	281	29	26	355	12	13.5
300F16/02BZPNB	DN300	PN16	460	333	32	26	410	12	18.0
200F10/02BZPNB	DN200	PN10	340	226	24	22	295	8	8.87
250F10/02BZPNB	DN250	PN10	395	281	26	22	350	12	11.2
300F10/02BZPNB	DN300	PN10	445	333	26	22	400	12	12.8

*Grade Mild Steel

*BZP Finish

*Dimensions in MM

*Flanges are to suit Nominal Bore Pressed Collars or MSS 'A' Stub Ends

*Dimensions are for guidance only – Please call to confirm if critical!